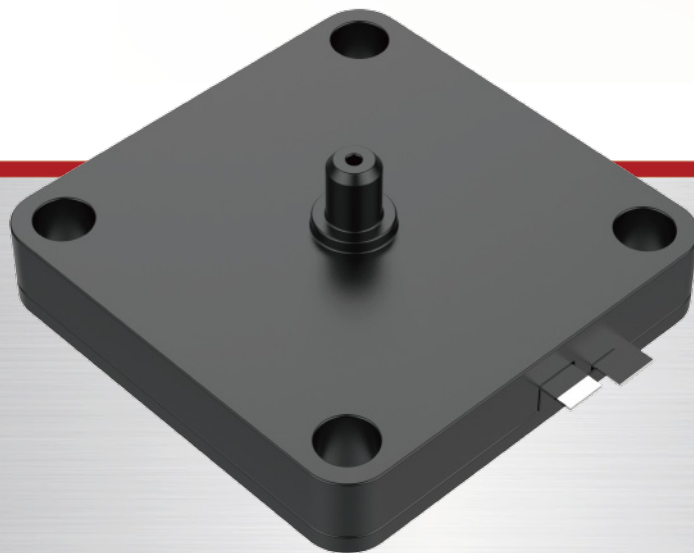




SENSOR
TECHNOLOGY

Piezoelectric Pump

- Small and lightweight
- Concentrated air flow



传感科技创造智慧生活。

Sensor technology shapes an intelligent life

www.audiowell.com

Piezoelectric Pump

The Piezoelectric Pump uses converse piezoelectric effect to transform electric signals into mechanical deformation of piezoelectric ceramic. This causes rapid change of gas volume in an enclosed space, which generates high-pressure, high-speed stable air flow through a tiny vent.

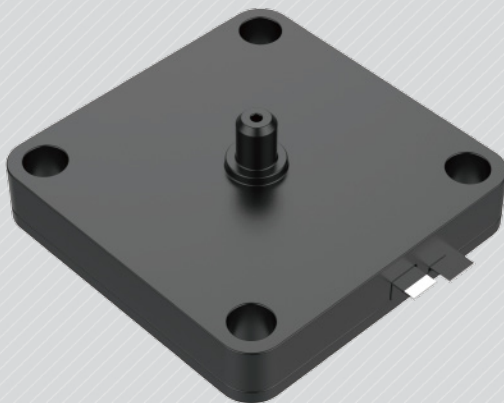
Features

- Small and lightweight
- Adjustable driving voltage for the regulation of air pressure and air flow in accordance with actual work requirement
- Concentrated air flow

Applications

- Small-size aromatherapy machine
- Heat dissipation of core chips
- Micro-flow test instrument

AUDIOWELL | SENSOR TECHNOLOGY



Model	HQ0067
Resonant frequency	24±2 KHz
Resonant impedance	≤200 Ω
Static capacitance	14±20% nF
Operating voltage	10~20 Vp-p
Static pressure	≥1.0 KPa
Flow rate	≥0.3 L/min